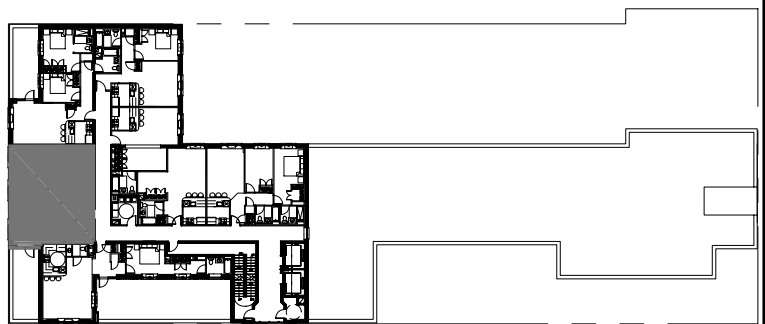


APT. PHB

2 BR, 2 BATH

975 S.F.

235 s.f. TERRACE



KEY PLAN

(NOTE: ALL DIMENSIONS ARE APPROXIMATE)



ARCHITECTURE • URBAN PLANNING
 NDG ARCHITECT, P.C.
 210 West Rogues Path • Cold Spring Hills, NY 11743
 TEL: 212.673.3110 • TEL: 631.673.3111 • FAX: 631.673.2031
 www.ndarchitects.com

PROJECT:
**SYCAMORE COURT
 CONDOMINIUM**
 3050 CORLEAR AVENUE
 RIVERDALE, N.Y. 10465

DATE: 05/11/10
 SCALE: 1/8" = 1'-0"
 DRAWN BY: KJS
 JOB #: 7-48
 DWG. #: **PHB**