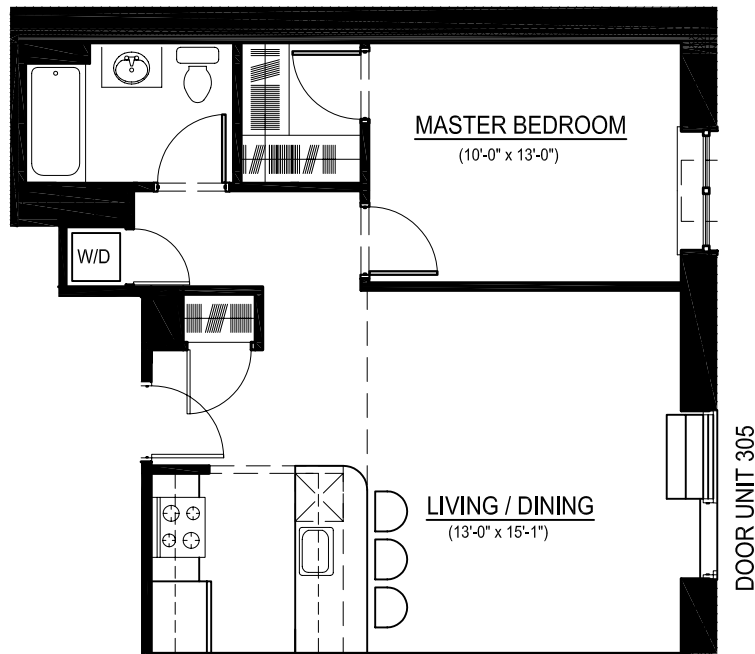


KEY PLAN

(NOTE: FOOTPRINT OF FLOORS 5 AND 6 DIFFER)



APT # 305-605

1 BR, 1 BATH

711 S.F.

(NOTE: ALL DIMENSIONS ARE APPROXIMATE)



ARCHITECTURE • URBAN PLANNING
NDG ARCHITECT, P.C.
210 West Rogues Path • Cold Spring Hills, NY 11743
TEL: 212.673.3110 • TEL: 631.673.3111 • FAX: 631.673.2031
www.ndarchitects.com

PROJECT:

**SYCAMORE COURT
CONDOMINIUM**
3050 CORLEAR AVENUE
RIVERDALE, N.Y. 10465

DATE: 05/11/10

SCALE: 1/8" = 1'-0"

DRAWN BY: KJS

JOB #: 7-48

DWG. #: **305-605**